

Zusätzliche Rhythmusübungen

Rhythmus 3a

Three staves of musical notation in 4/4 time. The first staff begins with a 4/4 time signature. The exercises consist of eighth and quarter notes, some beamed together, and some with slurs. The second staff continues the patterns with similar note values and slurs. The third staff concludes the exercise with a double bar line.

Rhythmus 3b

Two systems of musical notation in 3/4 time. The first system has two staves: the top staff starts with a 3/4 time signature and contains eighth and quarter notes with slurs; the bottom staff contains dotted quarter notes and eighth notes. The second system also has two staves with eighth and quarter notes, some with slurs and rests, ending with a double bar line.

Rhythmus 4a

Two staves of musical notation in 2/4 time. The first staff starts with a 2/4 time signature and contains quarter and eighth notes with slurs. The second staff continues the exercise with quarter and eighth notes, ending with a double bar line.

Zusätzliche Rhythmusübungen

Rhythmus 4b

Two systems of two staves each, in 3/4 time. The first system contains two lines of music with eighth and quarter notes, some beamed together, and rests. The second system also contains two lines of music with similar rhythmic patterns, including eighth notes and quarter notes with stems.

Rhythmus 5a

A single staff in 4/4 time featuring a sequence of eighth and quarter notes, some beamed together, and a final whole note.

Rhythmus 5b

Two staves in 4/4 time. The top staff contains eighth and quarter notes, some beamed together, and rests. The bottom staff contains eighth and quarter notes, some beamed together, and rests.

Rhythmus 6a

Two staves in 2/4 time. The top staff contains eighth and quarter notes, some beamed together, and rests. The bottom staff contains eighth and quarter notes, some beamed together, and rests.

Zusätzliche Rhythmusübungen

Rhythmus 6b

Musical notation for Rhythmus 6b in 4/4 time, consisting of two staves. The top staff features a sequence of eighth and quarter notes with various rests and accents. The bottom staff contains a rhythmic accompaniment of eighth and quarter notes with stems.

Rhythmus 7a

Musical notation for Rhythmus 7a in 3/4 time, consisting of two staves. The top staff shows a melody of quarter and eighth notes. The bottom staff provides a rhythmic accompaniment with eighth notes and rests.

Rhythmus 7b

Musical notation for Rhythmus 7b in 3/4 time, consisting of two staves. The top staff contains a melody with quarter and eighth notes. The bottom staff has a rhythmic accompaniment of eighth notes.

Rhythmus 8a

Musical notation for Rhythmus 8a in 4/4 time, consisting of one staff. The notation includes quarter notes, eighth notes, and rests, with repeat signs and a final double bar line.

Rhythmus 8b

Musical notation for Rhythmus 8b in 2/4 time, consisting of two staves. The top staff features a melody with quarter notes and rests. The bottom staff has a rhythmic accompaniment with quarter notes and rests.

Zusätzliche Rhythmusübungen

Rhythmus 9a

Two staves of musical notation in 3/4 time. The first staff begins with a treble clef and a 3/4 time signature. The melody consists of quarter notes, dotted quarter notes, and eighth notes. The second staff continues the melody with similar rhythmic patterns, ending with a double bar line.

Rhythmus 9b

Two staves of musical notation in 3/4 time. The first staff has a treble clef and a 3/4 time signature. The melody features a sequence of quarter notes and dotted quarter notes, some with slurs. The second staff continues the melody with quarter notes and dotted quarter notes, ending with a double bar line.

Rhythmus 10a

Two staves of musical notation in 2/4 time. The first staff has a treble clef and a 2/4 time signature. The melody consists of quarter notes and eighth notes, some with slurs. The second staff continues the melody with quarter notes and eighth notes, ending with a double bar line.

Rhythmus 10b

Two staves of musical notation in 4/4 time. The first staff has a treble clef and a 4/4 time signature. The melody features a sequence of quarter notes and eighth notes, some with slurs. The second staff continues the melody with quarter notes and eighth notes, ending with a double bar line.

Rhythmus 11a

Two staves of musical notation in 4/4 time. The first staff has a treble clef and a 4/4 time signature. The melody consists of quarter notes and eighth notes, some with slurs. The second staff continues the melody with quarter notes and eighth notes, ending with a double bar line.

Zusätzliche Rhythmusübungen

Rhythmus 11b

Musical notation for Rhythmus 11b, consisting of two staves in 4/4 time. The top staff contains a sequence of eighth and quarter notes with various rests and accents. The bottom staff contains a corresponding bass line with eighth and quarter notes, some with ties and accents.

Rhythmus 12a

Musical notation for Rhythmus 12a, a single staff in 4/4 time. It features a sequence of quarter and eighth notes, including a triplet of eighth notes and a quarter rest.

Rhythmus 12b

Musical notation for Rhythmus 12b, consisting of two staves in 3/4 time. The top staff contains a sequence of quarter and eighth notes with accents. The bottom staff contains a corresponding bass line with quarter and eighth notes, some with ties and accents.

Rhythmus 13a

Musical notation for Rhythmus 13a, a single staff in 4/4 time. It features a sequence of quarter and eighth notes with various rests and accents.

Rhythmus 13b

Musical notation for Rhythmus 13b, consisting of two staves in 4/4 time. The top staff contains a sequence of quarter and eighth notes with various rests and accents. The bottom staff contains a corresponding bass line with quarter and eighth notes, some with ties and accents.

Zusätzliche Rhythmusübungen

Rhythmus 14a

Three staves of musical notation in 3/4 time. The first staff begins with a 3/4 time signature. The rhythm consists of eighth and quarter notes, with some notes beamed together. The second staff continues the pattern with eighth notes and quarter notes, including some rests. The third staff concludes the exercise with eighth notes and quarter notes, ending with a double bar line.

Rhythmus 14b

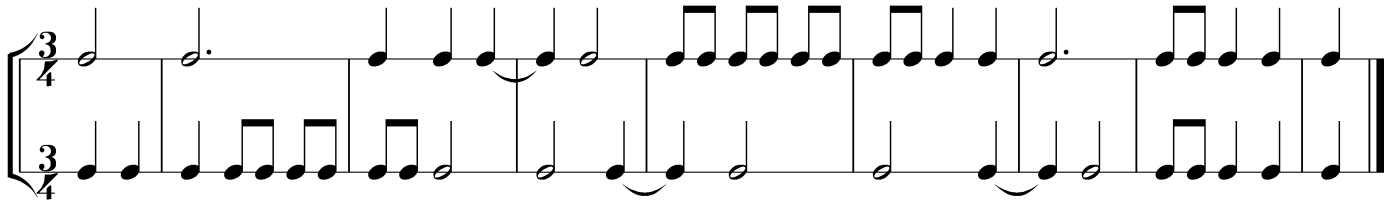
Two systems of musical notation in 4/4 time. The first system has two staves: the top staff contains quarter and eighth notes, and the bottom staff contains eighth notes. The second system also has two staves: the top staff contains eighth notes and quarter notes, and the bottom staff contains eighth notes. The exercise concludes with a double bar line.

Rhythmus 15a

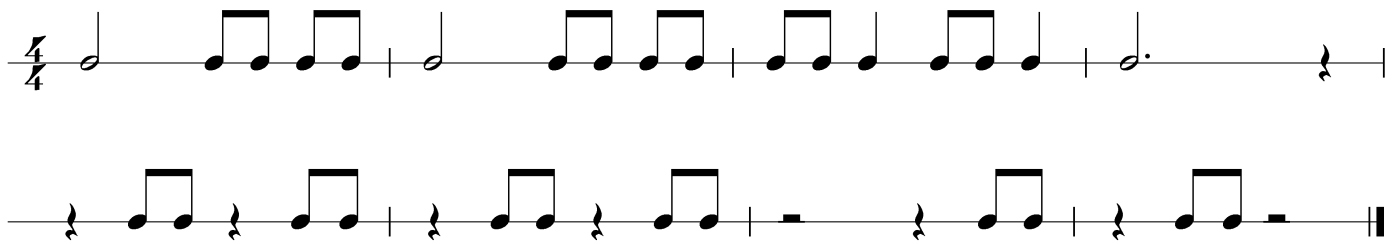
Two staves of musical notation in 2/4 time. The first staff starts with a 2/4 time signature and features eighth and quarter notes, some beamed together. The second staff continues the exercise with eighth notes and quarter notes, ending with a double bar line.

Zusätzliche Rhythmusübungen

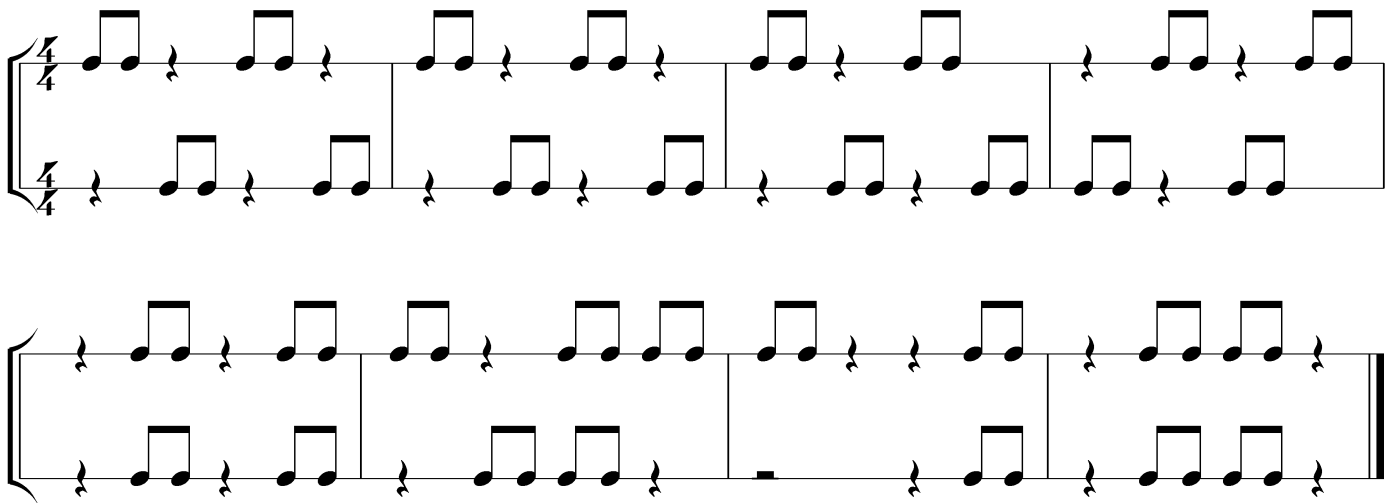
Rhythmus 15b



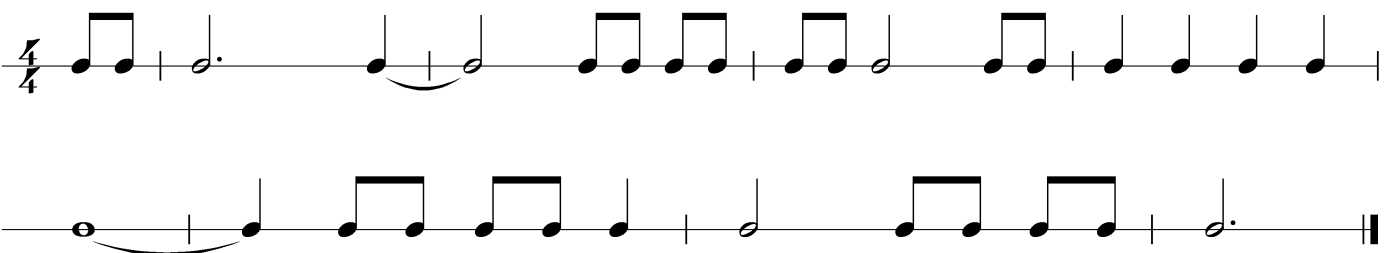
Rhythmus 16a



Rhythmus 16b



Rhythmus 17a



Zusätzliche Rhythmusübungen

Rhythmus 17b

Two systems of musical notation for Rhythmus 17b, each consisting of two staves. The first system starts with a treble clef and a 2/4 time signature. The melody in the upper staff features a sequence of eighth and quarter notes with various rests and slurs. The lower staff provides a harmonic accompaniment with similar rhythmic patterns. The second system continues the piece with similar notation, ending with a double bar line.

Rhythmus 18a

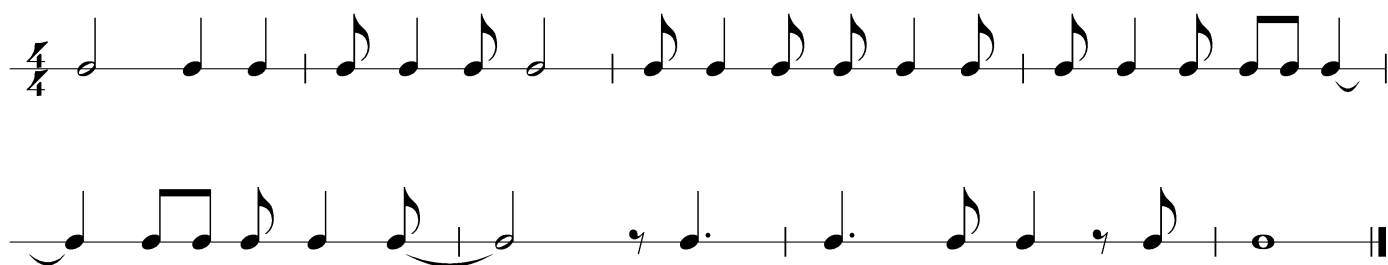
Two single-staff lines of musical notation for Rhythmus 18a in 2/4 time. The first line begins with a treble clef and a 2/4 time signature. The melody consists of eighth and quarter notes with rests. The second line continues the rhythmic exercise with similar note values and rests, ending with a double bar line.

Rhythmus 18b

Two systems of musical notation for Rhythmus 18b, each consisting of two staves. The first system starts with a treble clef and a 4/4 time signature. The melody in the upper staff features a sequence of quarter and eighth notes with rests and slurs. The lower staff provides a harmonic accompaniment with similar rhythmic patterns. The second system continues the piece with similar notation, ending with a double bar line.

Zusätzliche Rhythmusübungen

Rhythmus 19a



Rhythmus 19b

Two systems of musical notation in 4/4 time. The first system consists of two staves. The top staff has four measures: quarter, quarter, quarter, quarter; quarter, quarter, quarter, quarter; quarter, quarter, quarter, quarter; quarter, quarter, quarter, quarter. The bottom staff has four measures: quarter, quarter, quarter, quarter; quarter, quarter, quarter, quarter; quarter, quarter, quarter, quarter; quarter, quarter, quarter, quarter. The second system also consists of two staves. The top staff has four measures: quarter, quarter, quarter, quarter; quarter, quarter, quarter, quarter; quarter, quarter, quarter, quarter; quarter, quarter, quarter, quarter. The bottom staff has four measures: quarter, quarter, quarter, quarter; quarter, quarter, quarter, quarter; quarter, quarter, quarter, quarter; quarter, quarter, quarter, quarter.

Rhythmus 20a

